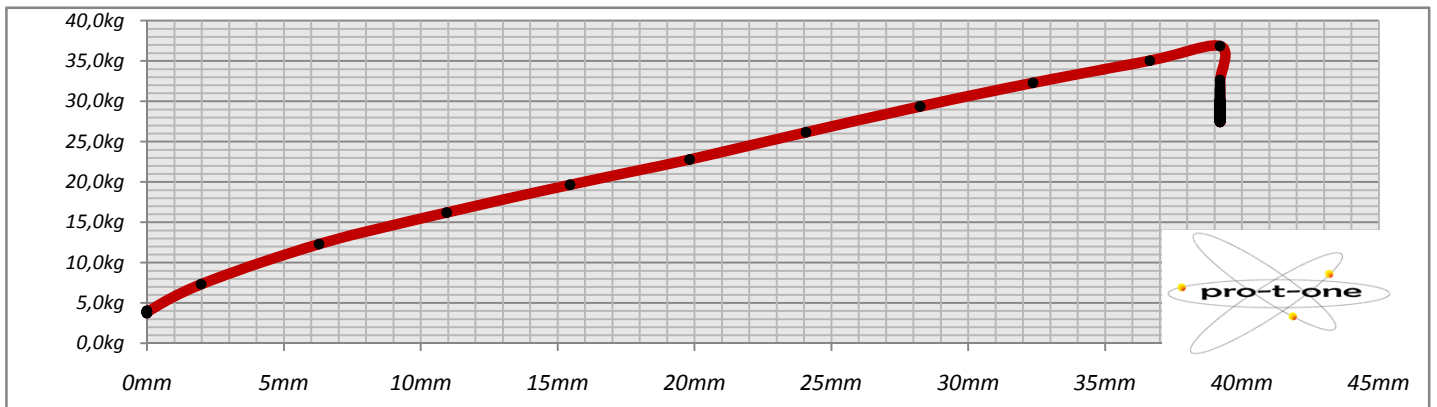
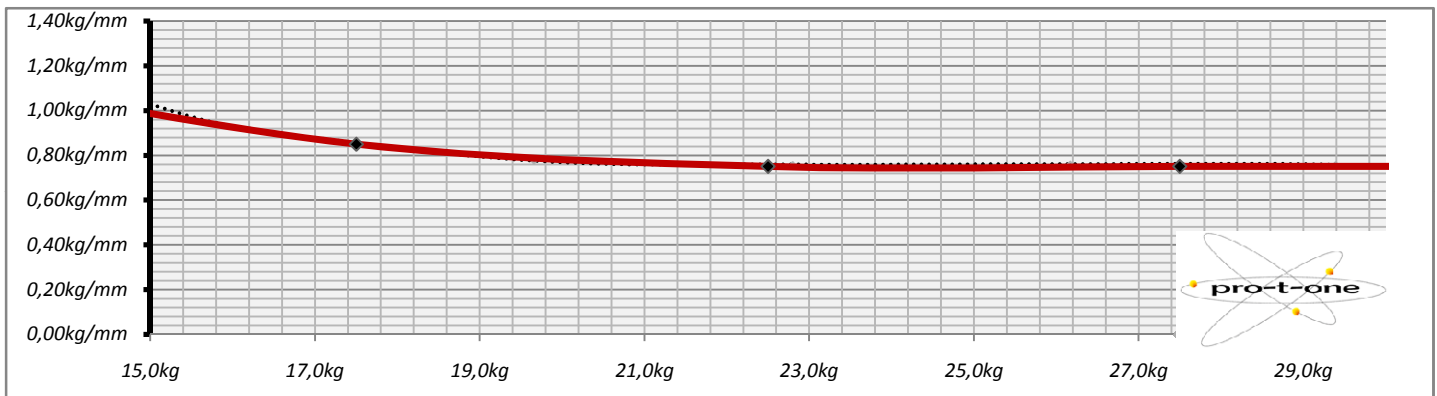


DEFORMATION - LOAD DIAGRAM

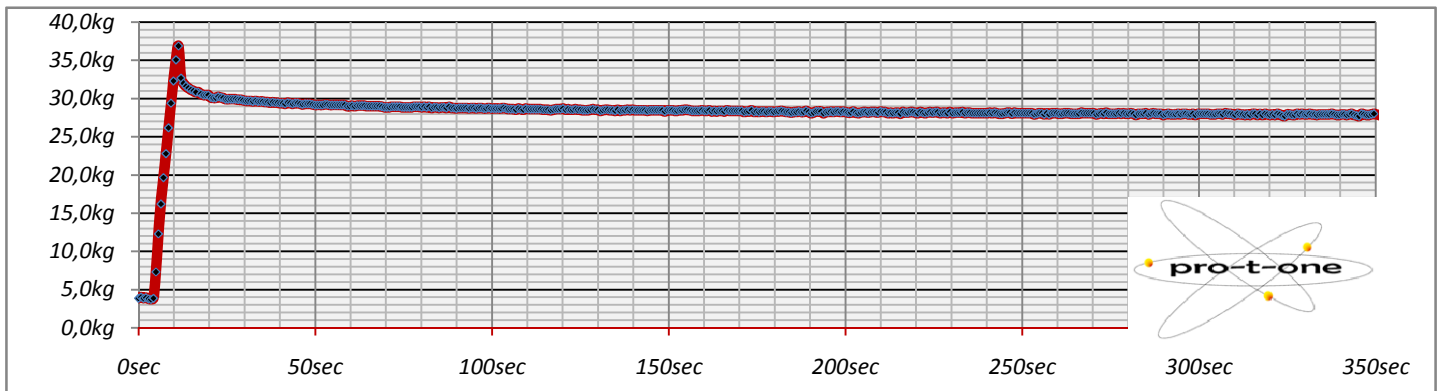


STRINGLAB	1,26 mm	temp 25°C - relative humidity 65%	
hydrogen evo 2,0 mono		sample time	700-800ms
		starting length	300mm
static stiffness 10-15kg	1,10 kg/mm	static stiffness 20-25kg	0,75 kg/mm
static stiffness 15-20kg	0,80 kg/mm	static stiffness 25-30kg	0,75 kg/mm

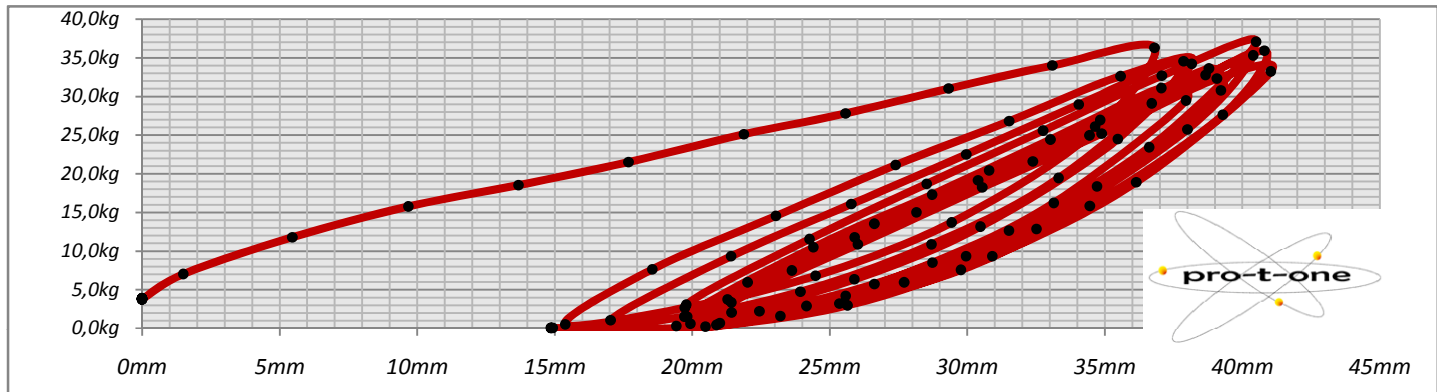
STRING STATIC STIFFNESS MODULUS



TENSION LOSS DIAGRAM



HYSTERESIS DIAGRAM - LOAD AND UNLOAD CYCLES



STRINGLAB hydrogen evo 2,0

1,26 mm
mono

temp 25°C - relative humidity 65%



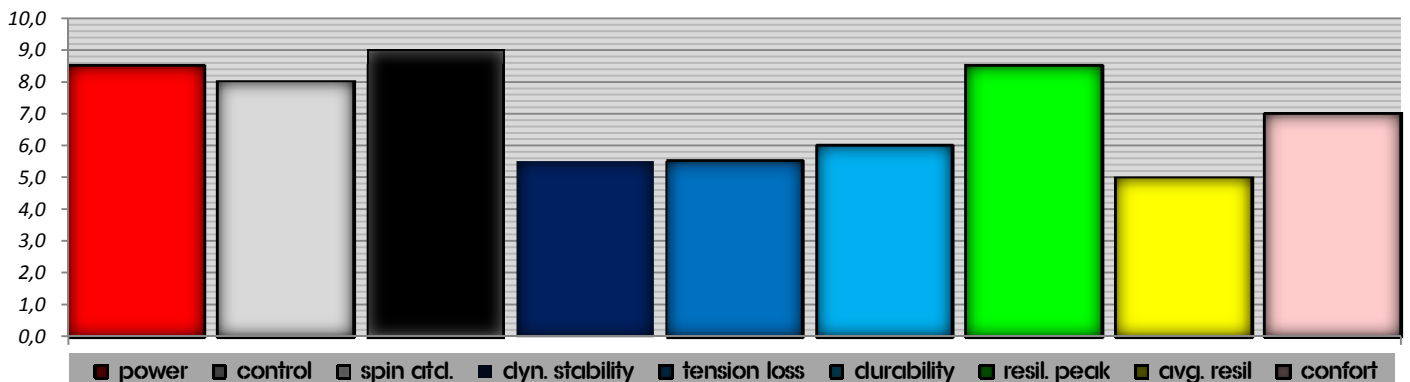
POWER LEVEL	660pnt	8,5/10	power attitude control attitude 8,0/10 stiffness stability attitude-consistency 0,5 tension loss after 300" - 5mins 0,5 dyn str life 6 - hrs 10 - hrs (approx.) maximum resilience range
CONTROL LEVEL	940pnt	8,0/10	
SPIN POTENTIAL	1,0	9,0/10	
DYN. STABILITY LEVEL	506pnt	5,5/10	
TENSION LOSS INDEX 300	23%	5,5/10	
PLAYING LIFE (tension-resilience)	197%	6,0/10	
MAX RESILIENCE RANGE	16kg	20kg	
RECOMMENDED TENSION	20kg	24kg	

RESILIENCE PEAK	131kgmm	8,5/10	90kgmm	reactivity level: high
AVERAGE RESILIENCE	140kgmm	5,0/10	vs gut	8-cycles
STRING PLANE STIFFNESS 22,5kg		4,0/10	new	⇒ 10+/10 used
STRING PLANE STIFFNESS 27,5kg		7,0/10	new	⇒ 10+/10 used

PRESTRECH	YES	recommended %	10%	5%
PROGRESSIVE PLASTICIZATION	YES	def. plast.	5,2mm	5%

		kg/mm			kg/mm	
STATIC STIFFNESS 10-15kg	tough	1,15	new	170%	⇒	1,95 used
STATIC STIFFNESS 15-20kg	medium-tough	0,85	new	194%	⇒	1,65 used
STATIC STIFFNESS 20-25kg	medium	0,75	new	207%	⇒	1,55 used
STATIC STIFFNESS 25-30kg	medium	0,75	new	200%	⇒	1,50 used
STATIC STIFFNESS 30-35kg	medium	0,75	new	187%	⇒	1,40 used
AVG. STATIC STIFFNESS 15-30	medium	0,78	kg/mm			

DYNAMIC STIFFNESS	230	±5 g/mm	sample time 20ms		
	high	9,0/10	reference tension 20kg		
STRING STIFFNESS EMULATOR	220	±5 lb/inch	string legnth 325mm - deflection 10mm		
ARM PROT - CONFORT LEVEL	7,0/10	medium	6,6/10	7,8/10	



DEFORMATION --> elastic & plastic	28,1	
RESILIENCE avg. - elastic deformation	5,0	18%
DUCTILITY avg. plastic deformation	15,3	55%
PROGRESSIVE PLASTICIZATION II	7,8	28%

